

RØNUS

BY LITHUANIAN IRONS

Cartridge
Pen-Style machine

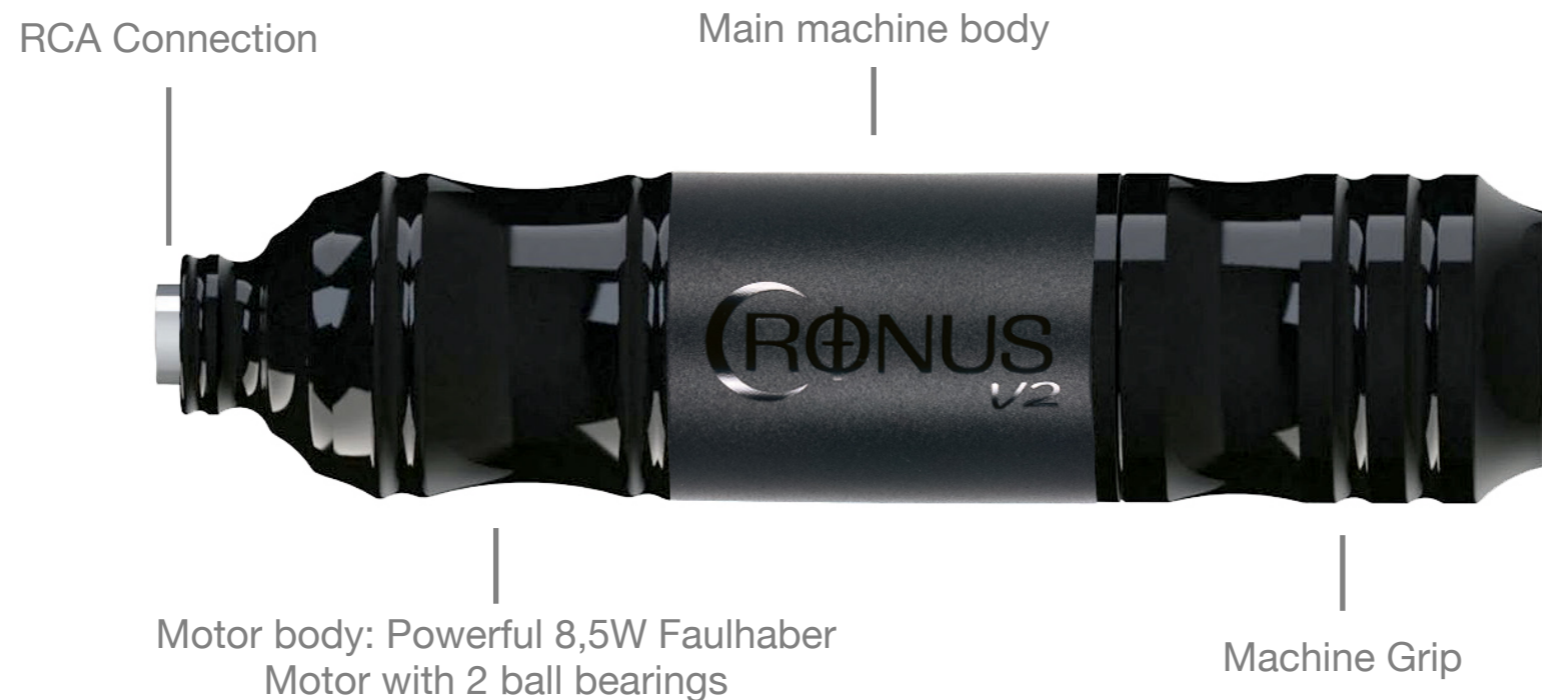
USER MANUAL



CONTENTS:

Machine Overview	3
The Grip and needle depth adjustment	4
Needle stroke wheels	4
Changing stroke wheels	5
Technical specifications	6
Safety, Cleaning and hygiene	6
Service and maintenance	7
Warranty	7

MACHINE OVERVIEW



THE CRONUS

Pen-style rotary tattoo machine for use with needle cartridges. Compatible with all standard good quality tattoo power supplies and external battery packs.

Package includes 2 different stroke wheels for Your preference: 3,5mm and 4,0mm.

Machine frame parts are made from solid rods of high grade aluminum, then polished and anodized.

THE GRIP AND NEEDLE DEPTH ADJUSTMENT

The Cronus comes equipped as standard with 27mm grip.

The Grip is safe to be sterilized in an autoclave at temperatures not higher than 135° Celsius or also suitable to be sprayed with cold disinfection products.

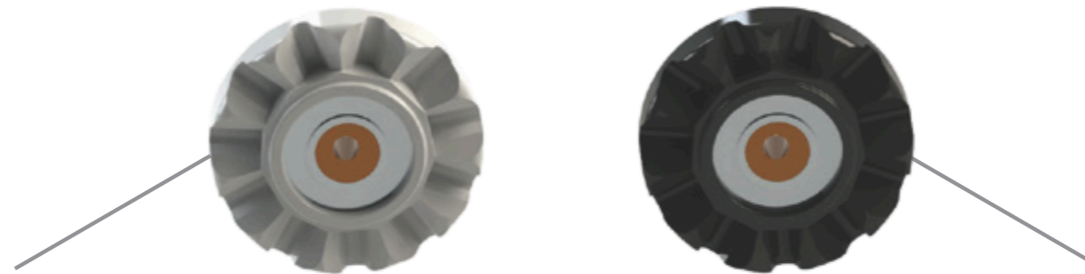
To adjust the needle depth, hold the machine body and simply rotate the grip clockwise or counter clockwise.



Attention: If the Grip rotates too hard, add a bit of PTFE or other silicone grease on the friction O-Ring.

NEEDLE STROKE WHEELS

The Cronus machine set includes 2 different needle stroke wheels.



WHITE wheel has 3,5mm needle stroke. Great choice for softer color blending or shading. Also works perfectly with smaller Lining needle groupings such as 3-9rl.

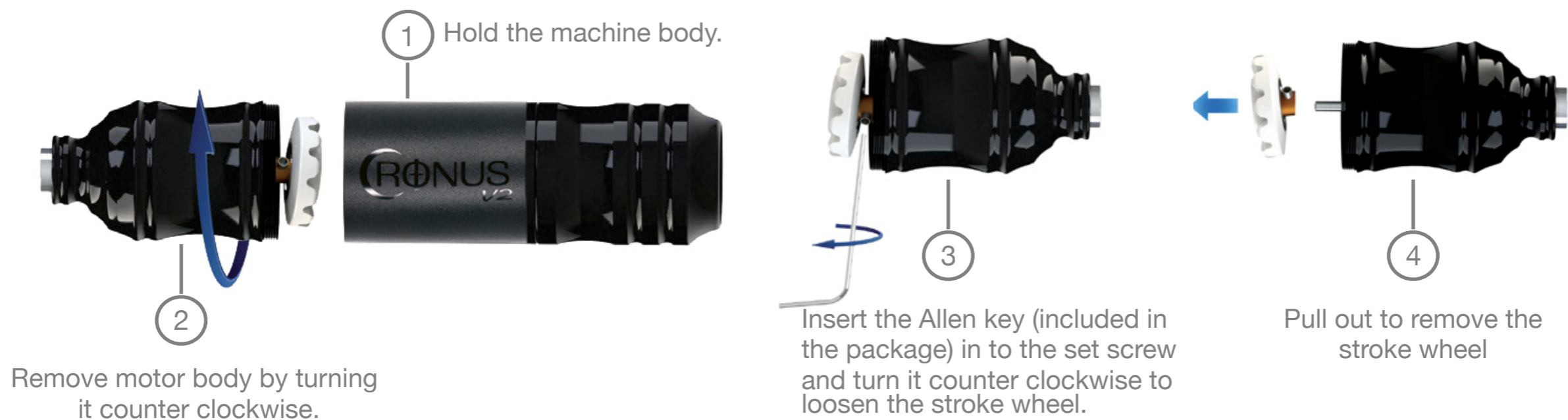
BLACK wheel has 4,0mm needle stroke. Great choice for faster solid color packing and bigger Lining needle groupings.

CHANGING STROKE WHEELS

CRONUS machine has the ability to change needle stroke by interchanging stroke wheels inside the machine. There are 2 available stroke wheels: 3,5mm and 4,0mm.

Carefully follow the next steps to swap out the stroke wheels.

Attention: please note that incorrectly fitted stroke wheel could cause machine damage (this is not covered under warranty).



Remove motor body by turning it counter clockwise.

Insert the Allen key (included in the package) in to the set screw and turn it counter clockwise to loosen the stroke wheel.

Pull out to remove the stroke wheel

- ⑤ Locate the spare stroke wheel in the package and mount it on the motor shaft.
Ensure that the Stroke Wheel is inserted till the end of the motor shaft and contacts with the stop washer.
- ⑥ Insert the Allen key into set screw of the Stroke Wheel and turn it clockwise to tighten.
The set screw should be tightened enough to avoid the motor shaft slipping in the Stroke Wheel bar. Otherwise it can seriously damage Your machine (this is not covered under warranty). Overtightening the set screw can cause the motor shaft deformation and damage the motor (this is not covered under warranty).
- ⑦ Re-attach the motor body by holding it in parallel position with the machine body. Slightly push the motor bolt in and turn it counter-clockwise until You hear the “Click”. Then turn it clockwise until the end to lock it.

TECHNICAL SPECIFICATIONS

Dimensions, D x L	Ø27 x 114mm
Weight	135 gram
Input voltage	8.0-13.0V DC (max 13.5V DC)
Needle stiches / second	70-125
Needle stroke lengths	3,5mm or 4,0mm
Needle depth adjustment	5,0mm
Power connection	RCA
Needle type	Cartridge needles (with internal membrane)

SAFETY, CLEANING AND HYGIENE

Although the grip is autoclavable we strongly recommend using plastic bags or barriers to cover the machine and keep it clean. Never spray or pour fluids directly on the surface to prevent fluids from entering the machine, it can cause short circuit or damage internal system elements and will void the warranty. Use only slightly dampened piece of paper or wipes to apply sterilization products.

Always use cartridges with internal membrane.

This will allow avoiding contamination inside the machine. Any fluids, pigments or oil inside the machine will void the warranty and may require additional service or replacement of internal parts.

SERVICE AND MAINTENANCE

The Cronus comes pre-lubricated from factory and does not require additional lubrication. Any changes or modifications not approved by the manufacturer could void the warranty.

We strongly recommend contacting us to service Your device every 12 months to ensure the proper condition of all working parts, internal clean up and fresh lubrication. Service is subject to fees.

For service and maintenance inquiries, please contact: service.Itirons@gmail.com

WARRANTY

All external machine body parts (Grip, Machine body, Motor body) are covered by 2 years warranty.

The motor and RCA connection are covered by 1 year warranty from date of purchase.

All sliding internal parts and stroke wheels are subject to wear and tear. The warranty applies to factory faults but not a wear of any moving components caused by normal or abnormal use.

The warranty is void if:

1. The machine has been opened in an inappropriate way.
2. The sliding mechanism or motor body have been opened.
3. Machine was additionally lubricated using not suitable grease.
4. Stroke wheel set screw wasn't tightened enough or overtightened (page 4).
5. The machine has been autoclaved or cleaned in an ultrasonic cleaner.
6. Components have been damaged by misuse or carelessness.
7. Alkaline or acid cleaning agents (high or low pH) have been used on the products.
8. More than 13.5 Volts have been applied to the machine.
9. Motor shows signs of being dropped.
10. Any sterilization fluids, inks or water found inside the machine.

The warranty does not cover shipping costs.